
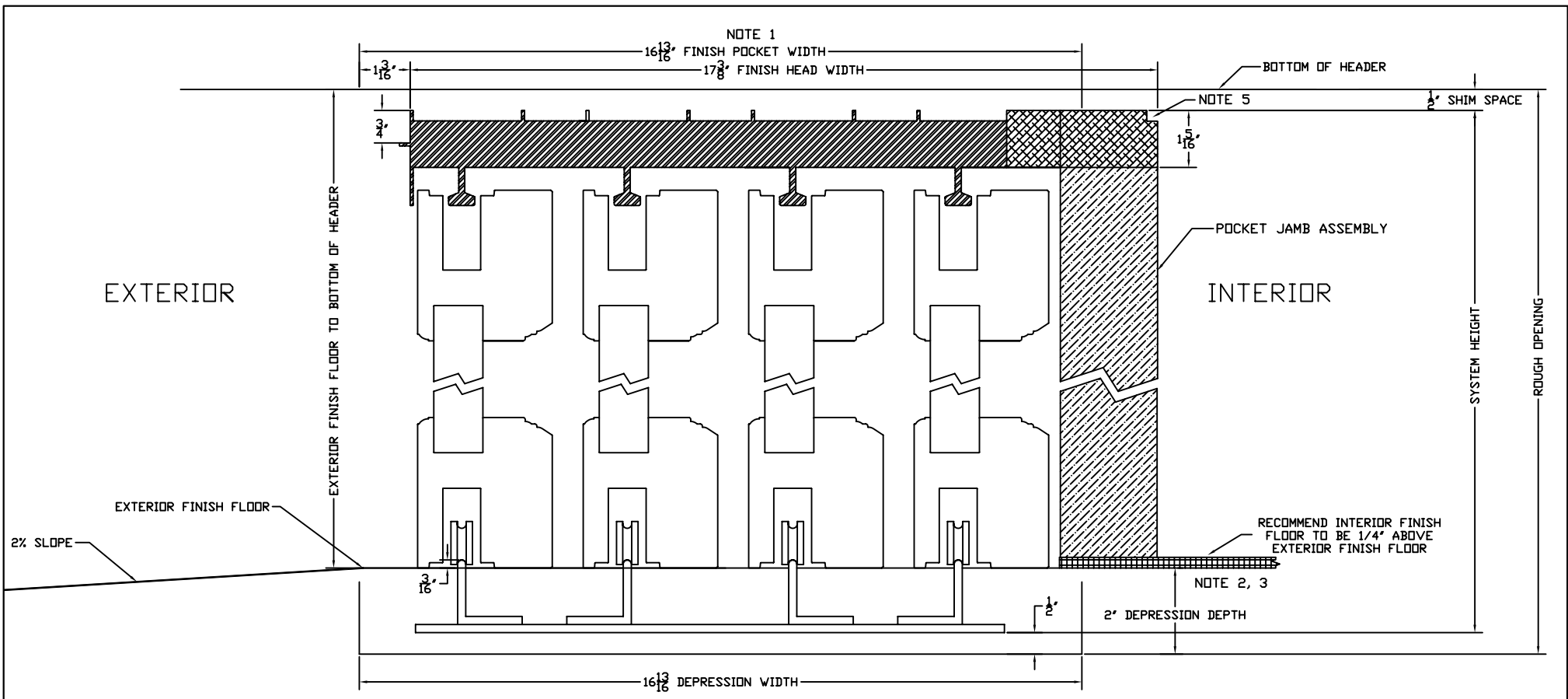






EXTERIOR ELEVATION

CUSTOMER APPROVAL BLOCK					TITLE XXXXP 1 1/2" TRACK			
<input type="checkbox"/> APPROVED <input type="checkbox"/> APPROVED AS NOTED <input type="checkbox"/> DISAPPROVED RESUBMIT					ARCHITECTURAL COLLECTION			
					DWN BY: AR		SCALE: NONE	REV.
					DATE: 02/13/07		DWG. NO.	0
					CHK. BY: CMP		ALS-018	
					APPD. BY: CMP		SHT. 1 OF 1	
SIGNED _____ DATE _____								
*** All diagrams, drawings and other documents produced by Sliding Visions, Inc. are the sole property of Sliding Visions, Inc and under penalty of law, neither these documents nor the information they convey may be reproduced or transmitted to any third party without written consent.								



NOTES:

1. BLACKOUT BOARD ON BOTH INTERIOR SURFACES (BY CUSTOMER)
2. INCLUDES THICKNESS OF EXTERIOR FINISH FLOOR. FROM INTERIOR FINISH FLOOR ADD 1/4"
3. CUSTOMER IS REQUIRED TO DRY PACK TRACK DEPRESSION AFTER INSTALLATION BY DOOR CONTRACTOR
4. FINISH FLOOR BY OTHERS
5. DRYWALL RETURN SIZE 1/4"x1/4"
6. SEE SYSTEM ELEVATION DRAWING FOR ROUGH OPENING DIMENSIONS

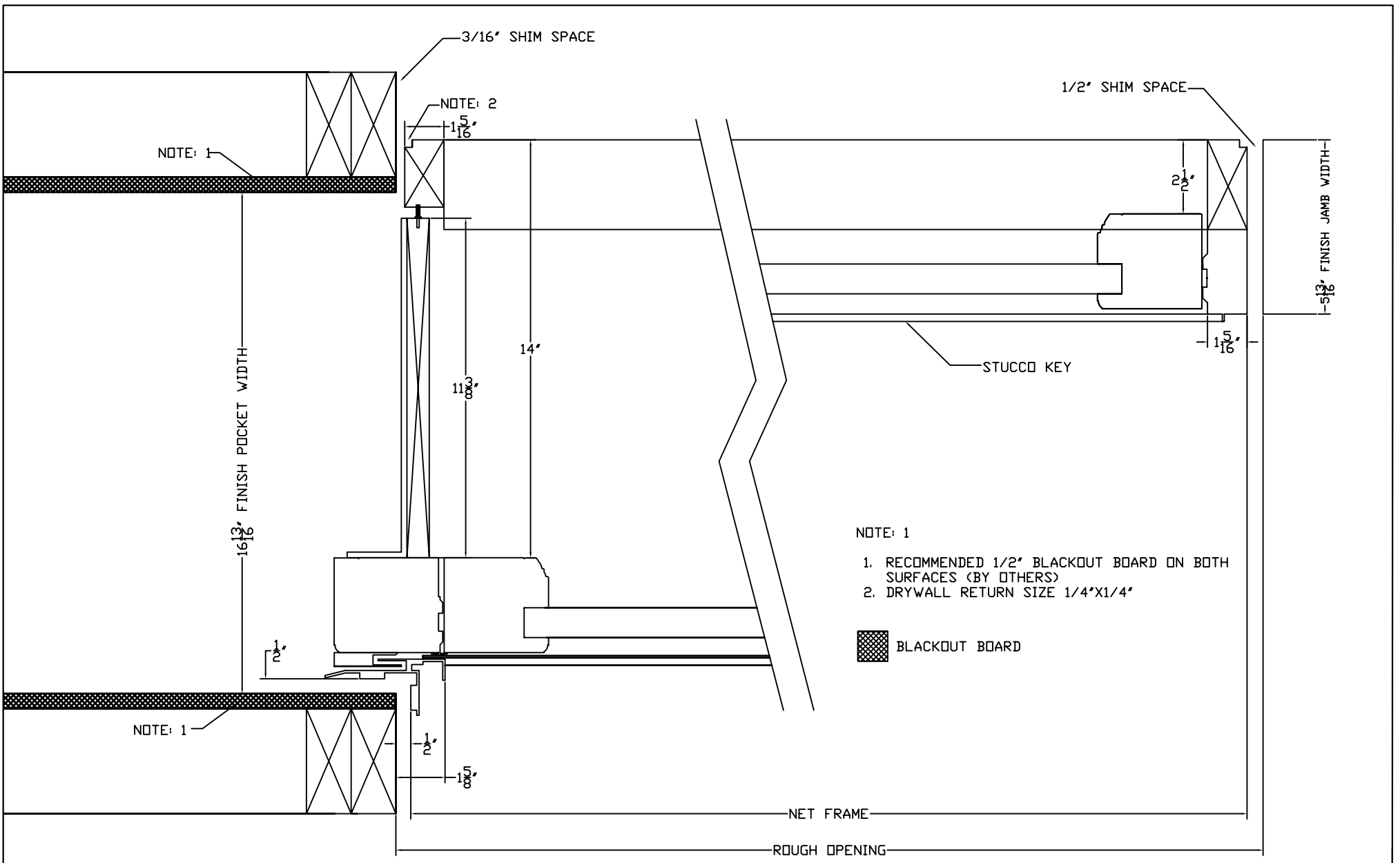
	ALUMINUM		WOOD JAMB
	WOOD HEAD		INTERIOR FINISH

STANDARD DETAIL FOR INFORMATION ONLY

					TITLE		
					PXXXX 1 1/2" TRACK		
DWN BY: AR		SCALE: NONE		REV.			
DATE: 10-16-06		DWG. NO. OVLS-D-016		0			
CHK. BY: CMP		SHT. 1 OF 1					
APPD. BY: CMP							




*** All diagrams, drawings and other documents produced by Sliding Visions, Inc. are the sole property of Sliding Visions, Inc and under penalty of law, neither these documents nor the information they convey may be reproduced or transmitted to any third party without written consent.



- NOTE: 1
1. RECOMMENDED 1/2" BLACKOUT BOARD ON BOTH SURFACES (BY OTHERS)
 2. DRYWALL RETURN SIZE 1/4"x1/4"

 BLACKOUT BOARD

STANDARD DETAIL FOR INFORMATION ONLY

					
0	10-06	APPROVED FOR CONSTRUCTION		CMP	
NO.	DATE	DESCRIPTION		BY	

TITLE PXXXX POCKET DETAIL		
DWN BY: AR	SCALE: NONE	REV.
DATE: 10-16-06	DWG. NO. OVLS-D-052	0
CHK. BY: CMP	SHT. 1 OF 1	
APPD. BY: CMP		

*** All diagrams, drawings and other documents produced by Sliding Visions, Inc. are the sole property of Sliding Visions, Inc and under penalty of law, neither these documents nor the information they convey may be reproduced or transmitted to any third party without written consent.